



STERILIZATION DEVICES

- I. Central Sterilization Units
- II. Prismatic Steam Sterilizer
- III. Washing Steam Sterilizer
- IV. Laboratory Type Vertical Steam Sterilizer



www.sumerinc.com





About us

Sümer A.Ş. was established in 1981 in Ankara to provide services in the medical device sector. It has aimed advancement since the day of its establishment by also taking growth and compliance with the contemporary technologies and protecting the environmental conditions. Our manufacturing takes place in an area of 25.000 m² in Ankara Organized Industrial Zone.

Our Firm is following the innovations in its sector and in abroad through its research and development unit and its application staff with a strong infrastructure of engineers, and is continuing to produce devices it had developed in computer environment based on such innovations with high technology and to contribute their development so as to be most beneficial for the Turkish medicine.

With this purpose, our Firm is strictly following the "Quality Management" principles and rules from design of the products to the after sale servicing.

Our Firm has been currently certificated for compliance with ISO 9001 quality management system, ISO 13485 medical device quality management system certificate and ISO 14001 environment management system certificate and with product certificates under MDD 93/42/EEC Medical Devices Directive and PED 97/23/EEC Pressurized Equipment certificate. Furthermore, our steam sterilizers, and disinfection and washing devices have been certificated by the German accredited body.

Our Firm is successfully implementing several projects supported by Tübitak, KOSGEB, and Ankara Development Agency. SÜMER A.Ş. has been awarded with the following:
Ankara Industry Chamber Award for 2012,
2011 R&D Award,
2012 Success Award.

Our Firm possesses the following certificates;
CE Certificates under the following directives:
ISO 9001,
ISO 13485,
ISO 14001 Quality Management System,
MDD 93/42/EEC Medical Devices,
PED 97/23/EEC Pressurized Equipment



Our Vision

To make the Sümer brand a global brand to make our Firm remembered first in the sector.

Our Mission

Our main task is to create designs with competition power in the global sense by taking the priorities of the sector into consideration and being respectful to the environment and people and giving the first priority to the wishes and expectations of customers, and also to produce innovative technological medical products by meeting all the national and international legal requirements.

Our Basic Values

- We are bound up with the Medical Ethical Rules,
- We are people-oriented,
- We respect environment,
- We are creative,
- We are customer-oriented,
- We are innovative,
- We are pro-active,
- We believe in the team spirit.

I. Central Sterilization Units

Our Firm implements turn-key sterilization projects designed by taking the hospital sizes into consideration, and gives services for the installation and commissioning of turn-key Central Sterilization Units.

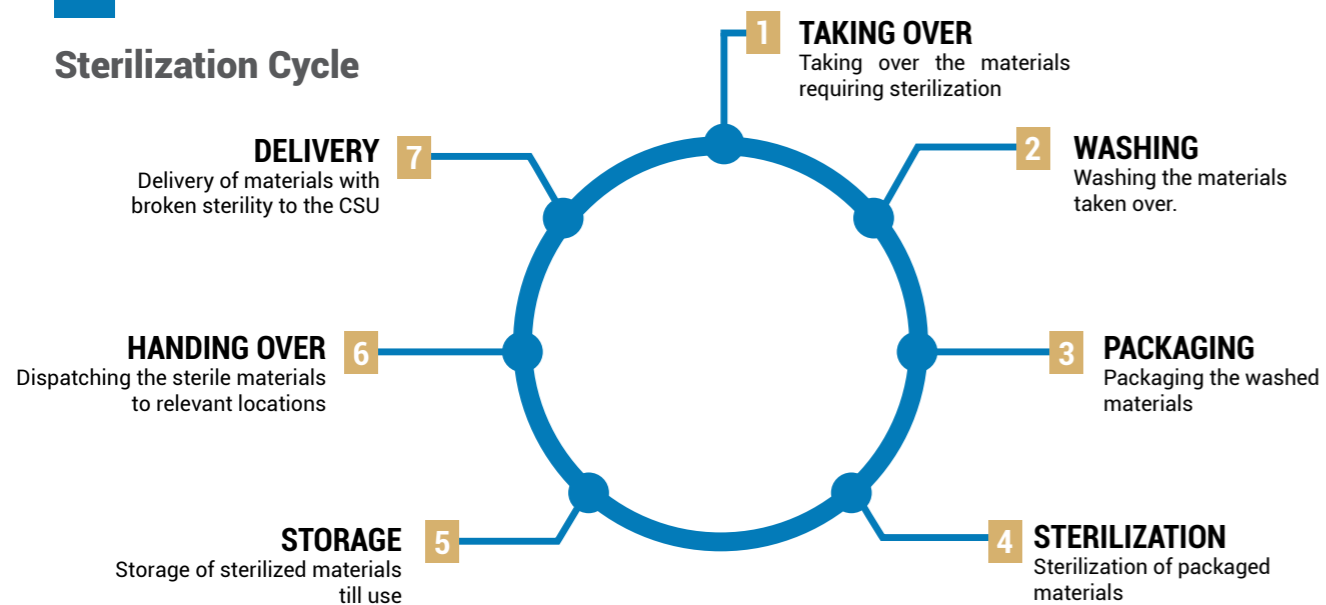
"It is essential for Central Sterilization Units (CSU) to eliminate the microorganisms existing in hospitals."

Sümer A.Ş. offers the following turn-key services for you, our valuable customers, in relation with the Central Sterilization Units;

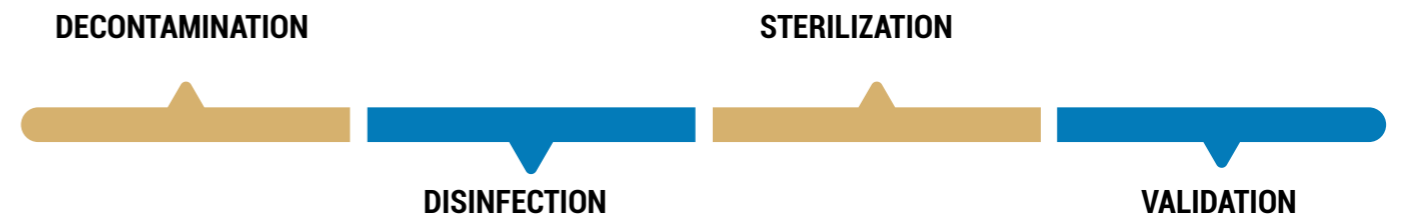
- Design,
- Central construction,
- Installation of products,
- Commissioning,
- Control and similar.



Sterilization Cycle



Sterilization Process



Central Sterilization Units are indispensable dynamic centers with great responsibility in ensuring the sterilization safety and prevention of infections, collecting the contaminated materials from various locations in the hospital to process and redelivering them to users and providing continuous services throughout 24 hours during 365 days of the year.

Sterilization must not be taken as a simple procedure; it must be considered as providing new materials suitable for medical purposes, or a process of novel production.

II. Prismatic Steam Sterilizer

This is produced for the sterilization of surgical and wound dressing tools, plastic and glass materials and bottled fluids by trained, certificated and officially assigned hospital staff.



“ Productivity, Safety, Traceability ”

General Characteristics

Control System	PLC processor
Way of use	Full automatic / buttons and touch screen
Screen Type	Color TFT, Touch LCD
Screen Dimensions	10,0"
Keypad	Touch Screen
Printer	40 Characters / lines, integrated thermal printer
Communication	RS232 /485 Port - USB (Ethernet Optional)
Warning system	Warnings with audiovisual and written messages
Data Storage	200 cycles
Procedure follow-up/tracing	Analog indicators for the follow-up of Cell, Jacket, Generator and Air pressure in addition to the Touch Screen
Motility	Easy orientation on 4 swivel castors and stabilization legs adjustable according to inclination of the floor
Vapor control	Through pneumatic valves
Electrical Supply Language	380 V, 50 Hz English (Default), French, Arabic, Russian, Spanish, Romanian, Turkish

Standard Programs

Medical and Surgical Tool (134°C)	~ 60 min
Textile Materials (134°C)	~ 60 min
Heavy Materials (134°C)	~ 65 min
Plastic/Rubber Materials (121°C)	~ 80 min
Rubber/Glass (125°C)	~ 60 min
Fluids (121°C)	~ 90 min
Flash (134°C)	~ 20 min
Prion (134°C)	~ 60 min
Bowie & Dick Test (134°C)	~ 35 min
Vacuum Leakage Test	~ 25 min
Number of optional programs	99

Processing times are load-dependent, and are given as approximate figures. These times cover the entire sterilization process with an average load including the drying stage. Programs can be customized based on the needs of the customer.

Sterilization Process

Pre-vacuum and Filling Stage	Integrated vacuum pump for initial pre-vacuum and subsequent automatic water filling.
Heating Stage	Fast saturated steam production by means of powerful heating elements.
Sterilization Control	A PT-100 temperature probe controls the chamber temperature, with the possibility of installing another flexible PT-100 temperature probe for liquid programs.
Cooling and Drying Stage	In solid program, discharge is automatically forced during cooling stage to reduce the cycle time. Then, integrated heating jacket together with pre-vacuum pulses is activated for a fast and intense drying.
Security	All safety standards are covered with safety valve, safety thermostat and safety pressure switch, door opening prevention system in case of overpressure, open door sensor and water level detector. EU Directive and Standards:
2014/35/EU	Low Voltage
2014/30/EU	Electromagnetic Compatibility
2014/68/EU	Pressure Equipment

Additional Certifications:

93/42/EEC, 2011/65/EU, 2012/19/EU, EN ISO 13485, EN ISO 14971, EN 285, EN/IEC 61010-2-040, EN 61326-1, EN 62304

TEMPERATURE	
Range	115°C - 137°C (Chamber)
Measurement	PT 100 (DIN A Class)
Sensor Position	Chamber (1)

PRESSURE	
Measurement	Pressure Sensors (4)
Sensor Position	Chamber (1), Jacket(1), Generator (1), Gasket(1)

VACUUM	
Source	Pump, Double/ Single Water Ring
Pre-Vacuum	Yes

DEVICE CONSTRUCTION	
Body	AISI 304 Stainless Steel Optional AISI 316 L Stainless Steel
Chamber	6mm, AISI 316 L Stainless Steel Optional up to 12mm thickness
Jacket	3mm, AISI 316L Stainless Steel Optional up to 5mm thickness
Door	10mm, AISI 304 Stainless Steel Optional AISI 316 L Stainless Steel
Panel Cover	1-1,5 mm AISI 304 Stainless Steel Optional AISI 316 L Stainless Steel Up to 3mm thickness
Pipes	Brass, AISI 304 Stainless Steel, AISI 316 L Stainless Steel (Optional)
Chamber Polishing	Electropolishing, Sandblasting(Optional)

DRAINAGE	
Water	Inclined pipe to be installed onsite with at least 2 m of length (Diameter: 2"-3")
Steam	Pneumatic valve, software controlled
Air	Vacuum Motor (Built-in)



Our Sterilization Devices are designed and produced so as to be compliant with production and product standards. "Type Tests for Prismatic Steam Sterilizer" and "Installation Validations" have been implemented and certificated by the German accreditation Body HYGCEN GmbH under EN 285 and TS EN 17665-1-2 directives.



www.sumerinc.com

INSTALLATION CONDITIONS: At least 60 cm. space is needed on both lateral sides of the device to provide an effective technical service. Exhaust fan or ventilation funnel needs to be placed above the device for an effective evacuation of heat.

*All specifications herein are provided for information purposes only and may be modified without notice.

www.sumerinc.com

STERILIZATION DEVICES

Chamber Dimensions

Chamber volume (L)	125	175	200	225	250	325	425	470	490	538	580	628	670	718	760	800	900	1000	1200
Height (mm)	500	500	500	500	500	670	670	670	670	670	670	670	670	670	670	670	670	670	670
Width (mm)	500	500	500	500	500	670	670	670	670	670	670	670	670	670	670	670	670	670	670
Depth (mm)	500	700	800	900	1000	750	950	1050	1100	1200	1300	1400	1500	1600	1700	1800	2020	2250	2675
STU Capacity	-	1	1	1	1	2-4	6	6	6	6-8	8	8	8-10	10	10	10-12	12	14	16

Weights – Single Sliding Door

Chamber volume (L)	125	175	200	225	250	325	425	470	490	538	580	628	670	718	760	800	900	1000	1200
Weight of the Device (kg)	590	630	670	710	750	800	850	900	945	1010	1060	1120	1200	1270	1330	1390	1450	1510	1570
Packaging Weight (kg)	730	750	810	800	850	900	990	1040	1060	1150	1210	1290	1360	1430	1520	1590	1660	1700	1770

Dimensions – Single Sliding Door Steam Sterilizer

Chamber volume (L)	125	175	200	225	250	325	425	470	490	538	580	628	670	718	760	800	900	1000	1200
Height (mm)	1800	1800	1800	1800	1800	2010	2010	2010	2010	2010	2010	2010	2010	2010	2010	2010	2010	2010	2010
Width (mm)	890	890	890	890	890	1120	1120	1120	1120	1120	1120	1120	1120	1120	1120	1120	1120	1120	1120
Depth (mm)	1250	1300	1350	1400	1500	1100	1450	1550	1600	1700	1800	1900	2000	2100	2200	2300	2500	2750	2900

Weights – Double Sliding Door

Chamber volume (L)	200	225	250	325	425	470	490	538	580	628	670	718	760	800	900	1000	1200
Weight of the Device (kg)	710	760	810	850	900	950	985	1050	1110	1170	1230	1310	1390	1450	1510	1580	1650
Packaging Weight (kg)	850	870	940	980	1070	1090	1110	1190	1250	1330	1400	1470	1560	1630	1700	1780	1900

Dimensions – Double Sliding Door Steam Sterilizer

Chamber volume (L)	200	225	250	325	425	470	490	538	580	628	670	718	760	800	900	1000	1200
Height (mm)	1800	1800	1800	2010	2010	2010	2010	2010	2010	2010	2010	2010	2010	2010	2010	2010	2010
Width (mm)	940	940	940	1170	1170	1170	1170	1170	1170	1170	1170	1170	1120	1120	1120	1120	1120
Depth (mm)	1150	1250	1350	1100	1300	1400	1450	1550	1650	1750	1850	1950	2050	2150	2350	2600	2750

Volume and Power

Chamber volume (L)	125	175	200	225	250	325	425	470	490	538	580	628	670	718	760	800	900	1000	1200
Generator Power (3Phase/400±10VAC)	20 kW		30 kW				40 kW				50 kW				60 kW				
Installed Power	25 kW, 3 Phase / 400 VAC ±10		35 kW, 3 Phase / 400 VAC ±10				45 kW, 3 Phase / 400 VAC ±10				55 kW, 3 Phase / 400 VAC ±10				65 kW, 3 Phase / 400 VAC ±10				
EQUIPMENT-RELATED CHARACTERISTICS	Main Supply Vapor	4-6 Bars																	
	Generator Volume (L)	60	60	60	60	60	60	70	70	70	70	70	75	75	80	80	80	80	100



III. Washer and Steam Sterilizer

General Characteristics

Control System	PLC processor
Way of use	Full automatic/ buttons and touch screen
Screen Type	Color TFT, Touch LCD
Screen Dimensions	7,0"
Keypad	Touch Screen
Printer	40 characters/lines, integrated thermal printer
Communication	RS232/RS485 Port/USB (Ethernet Optional)
Warning system	Warnings with audiovisual and written messages
Data Storage	200 cycles
Procedure follow-up/tracing	Analog indicators for the follow-up of Cell, Jacket, Generator and Air pressure in addition to the Touch Screen
Motility	Easy orientation on 4 swivel castors and stabilization legs adjustable according to inclination of the floor
Vapor control	through pneumatic valves
Body	AISI 304 Stainless Steel
Cell	6 mm, AISI 316 L Stainless Steel
Jacket	6 mm, AISI 316 L Stainless Steel
Door	20 mm, AISI 316 Stainless Steel
Panel Coating	AISI 304 Stainless Steel
Piping	PTFE Hose, AISI 304 Stainless Steel

Steam Sterilizer Programs

Medical and Surgical Tool (134°C)	~ 60 min
Textile Materials (134°C)	~ 60 min
Heavy Materials (134°C)	~ 65 min
Plastic/Rubber Materials (121°C)	~ 80 min
Rubber/Glass (125°C)	~ 60 min
Fluids (121°C)	~ 90 min
Flash (134°C)	~ 20 min
Prion (134°C)	~ 60 min
Bowie & Dick Test (134°C)	~ 35 min
Vacuum Leakage Test	~ 25 min
Number of optional programs	99

Processing times are load-dependent, and are given as approximate figures. These times cover the entire sterilization process with an average load including the drying stage.

Washing Programs

NO		PROGRAM	SET TEMPERATURE (°C)	TIME SET (s)		
P3	P2	P1	1	Pre-washing	45	120
			2	Washing	60	600
			3	Drying 1	60	300
			4	Drying 2	60	300
			5	Disinfection	93	600
	6	Drying	90	900		

P1: WASHING
P2: WASHING + DISINFECTION
P3: WASHING + DISINFECTION + DRYING
P4: DRYING

PROGRAM	SET TEMPERATURE (°C)	TIME SET (s)
Drying	90	900

P5: SELF-DISINFECTION OF THE DEVICE

PROGRAM	SET TEMPERATURE (°C)	TIME SET (s)
Disinfection	93	600

Dimensions of the Device

Chamber volume (L)	96	125	175	250
Height (mm)	1800	1800	1800	1800
Width (mm)	870	870	870	870
Depth (mm)	1030	1155	1355	1755

Chamber Dimensions

Steam Sterilizer Chamber Dimensions

Chamber volume (L)	96	125	175	250
Height (mm)	500	500	500	500
Width (mm)	500	500	500	500
Depth (mm)	385	500	700	1000
STU Capacity	-	-	1	1

Washing Chamber Dimensions

Chamber volume (L)	100
Height (mm)	565
Width (mm)	595
Depth (mm)	550
Number of Basket Racks	3
STU Capacity	6
For Feeding-bottle Washing	2 Shelves 4 STU



IV. Laboratory-type Vertical Steam Sterilizer

General Characteristics

Control System	4,3" PLC processor
Way of use	Full automatic/ buttons and touch screen
Keypad	Touch Screen
Printer (Optional)	40 characters/lines, integrated thermal printer
Communication	RS232/RS485 Port/USB (Ethernet Optional)
Warning system	Warnings with audiovisual and written messages
Data Storage	200 cycles
Procedure follow-up/tracing	Analog indicators for the follow-up of Cell, Jacket, Generator and in addition to the Touch Screen
Motility	Featuring easy orientation with the help of 2 swivel castors and 2 castors with brakes
Vapor control	Through pneumatic valves
Body	AISI 304 Stainless Steel
Cell	3 mm, AISI 316L Stainless Steel
Jacket	3 mm, AISI 316L Stainless Steel
Door	12 mm, AISI 304 Stainless Steel
Panel Coating	AISI 304 Stainless Steel
Piping	Brass, AISI 304 Stainless Steel
Cell Polishing	Sanding, Electro-polishing (Optional)

Standard Programs

Medical and Surgical Tool (134°C)	~ 60 min
Textile Materials (134°C)	~ 60 min
Plastic/Rubber Materials (121°C)	~ 70 min
Fluids (121°C)	~ 75 min
Flash (134°C)	~ 30 min
Prion (134°C)	~ 55 min
Bowie & Dick Test (134°C)	~ 35 min
Vacuum Leakage Test	~ 20 min
Number of optional programs	8

Processing times are load-dependent, and are given as approximate figures. These times cover the entire sterilization process with an average load including the drying stage. Programs can be customized based on the needs of the customer.

Technical Specifications of Vertical Steam Sterilizer

Chamber Volume (L)	Device Dimensions			Device Weight (kg)	Packaging Weight (kg)	Generator Power (kW)	Generator Volume (L)	Installed Power	Main Supply Vapor
	Height (mm)	Width (mm)	Depth (mm)						
75	980	1050	750	175	240	10	20	15 kW, 3 Phase / 400 VAC ±10	1/2" Pipe 5 Bars
90	1110	1150	850	185	260	10	25	15 kW, 3 Phase / 400 VAC ±10	1/2" Pipe 5 Bars



SLIDING VERTICAL STEAM STERILIZER



FLYWHEEL VERTICAL STEAM STERILIZER

Standards and Directives for Steam Sterilizer

Medical Devices Directive	MDD 93/42/EEC / 2007/47/EC
Medical Device Class	Class IIb, MDD 93/42/EEC, 2007/47/EC (Ek. IX)
Low-voltage Directive	2006/95/EC - EN 60601-2-040, EN 60601-1, EN 61010-1
Electromagnetic Compatibility Directive	2004/108/EC EN 60601-1-2, EN 61326-1
Pressurized Equipment Directive	PED 97/23/EC : EN 13445-1, -2, -3, -4, -5
Prismatic Steam Sterilizer Standard	EN285
Quality Management System	ISO 9001
Medical Devices Quality Management System	ISO 13485
Environment Management System	ISO 14001

Printer

It is possible to follow the parameters below with alphanumeric printer with thermal technology and 40 columns.

Organization – Device Serial No – Device Installation No (is any) - Date and Time Information
 Device Volume – Sequential Sterilization Number - Program Number
 Pre-vacuum time and Stage Number
 Pre-heating Time and Stage Number
 Sterilization Temperature – Pressure - Time
 Drying Temperature - Pressure- Time
 Possible Error Messages of the System
 Total Sterilization Time
 Printer (optional in vertical steam sterilizer)

Safety and Quality

- It protects the user against current leaks
- Short circuit protection
- Safety Valve
- HEPA filter for fresh air
- Water level control with magnetic float within the generator
- Water level float (in the water tank) (optional)
- Water vapor evaluation with pneumatic valve
- Leak Test
- Password protection
- Sensor protection against obstacles on the door way
- Pressurized door locks
- Safety system in models with double sliding doors to protect opening simultaneously
- Emergency button

Waste Discharge	
Water	With metal pipe with at least 2 m inclination (diameter: 2" - 3")
Vapor	Control through the pneumatic valve and software
Air	Through the Vacuum Motor (within the device)

Chamber	
Test Pressure	8 bars
Test Temperature	148 °C
Operation Temperature	134 °C
Operation Pressure	2,4 Bars

Generator	
Test Pressure	8 bars
Test Temperature	159 °C
Operation Temperature	145 °C
Operation Pressure	3,5 Bars
Water Level Protection Stainless	CRES / AISI 304 (CRES: Anticorrosive Stainless Steel)

Energy Consumption	
Electricity	20 kW//Cycle
Su	~120 L//Cycle

Temperature	
Range	115°C - 137°C (Cell)
Measurement	3xPT 100 (DIN A Class)
Sensor Position	Cell (1), Generator (1), Jacket (1)

Pressure	
Measurement	Pressure Sensors (6)
Sensor Position	Chamber (1), Jacket (1), Generator (1), Water (1), Gasket (1), Air (1)

Vacuum	
Source	Pump with fluid ring (2.2kW)
Pre-vacuum	Yes



Our Steam Sterilizer are used for sterilization of heat-resistant medical devices and tools with saturated vapor.

Product Lists, Reference Numbers And GMDN Codes

Sterilization Devices

SM Series Sliding Door Prismatic Autoclave Sterilizer

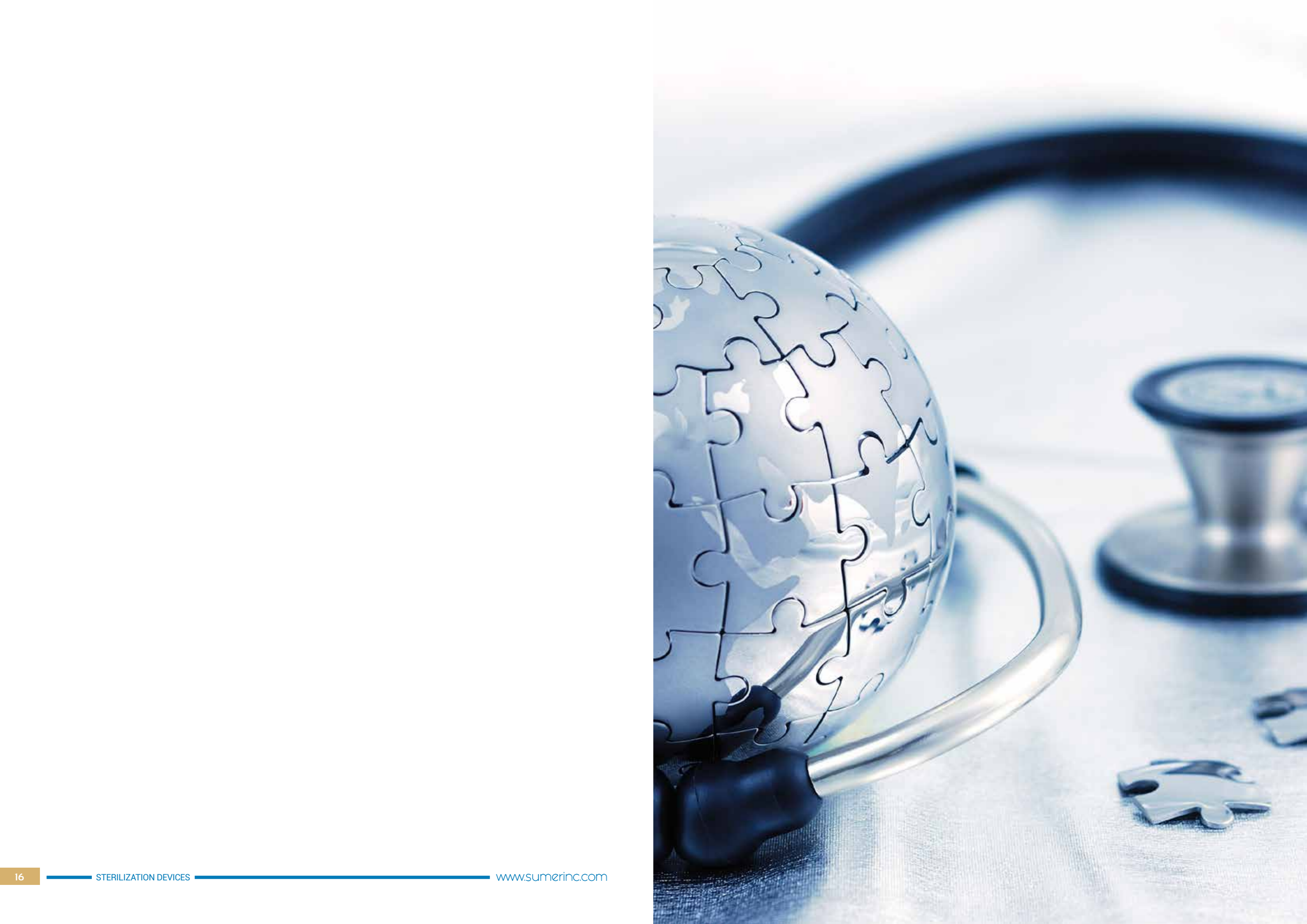
REFERENCE NUMBER	PRODUCT NAME	MODEL	GMDN CODE
8698918580589	SM-2 CKK Double Sliding Door Prismatic Autoclave Sterilizer 250 L	SM-2 CKK 250 L	38671 - Steam sterilizer
8698918580596	SM-2 CKK Double Sliding Door Prismatic Autoclave Sterilizer 325 L	SM-2 CKK 325 L	38671 - Steam sterilizer
8698918582231	SM-2 CKK Double Sliding Door Prismatic Autoclave Sterilizer 425 L	SM-2 CKK 425 L	38671 - Steam sterilizer
8698918580411	SM-2 CKK Double Sliding Door Prismatic Autoclave Sterilizer 470 L	SM-2 CKK 470 L	38671 - Steam sterilizer
8698918580428	SM-2 CKK Double Sliding Door Prismatic Autoclave Sterilizer 490 L	SM-2 CKK 490 L	38671 - Steam sterilizer
8698918580435	SM-2 CKK Double Sliding Door Prismatic Autoclave Sterilizer 538 L	SM-2 CKK 538 L	38671 - Steam sterilizer
8698918580442	SM-2 CKK Double Sliding Door Prismatic Autoclave Sterilizer 580 L	SM-2 CKK 580 L	38671 - Steam sterilizer
8698918580459	SM-2 CKK Double Sliding Door Prismatic Autoclave Sterilizer 628 L	SM-2 CKK 628 L	38671 - Steam sterilizer
8698918580466	SM-2 CKK Double Sliding Door Prismatic Autoclave Sterilizer 670 L	SM-2 CKK 670 L	38671 - Steam sterilizer
8698918580473	SM-2 CKK Double Sliding Door Prismatic Autoclave Sterilizer 718 L	SM-2 CKK 718 L	38671 - Steam sterilizer
8698918580480	SM-2 CKK Double Sliding Door Prismatic Autoclave Sterilizer 760 L	SM-2 CKK 760 L	38671 - Steam sterilizer
8698918580794	SM-2 CKK Double Sliding Door Prismatic Autoclave Sterilizer 800 L	SM-2 CKK 800 L	38671 - Steam sterilizer
8698918581333	SM-2 CKK Double Sliding Door Prismatic Autoclave Sterilizer 900 L	SM-2 CKK 900 L	38671 - Steam sterilizer
8698918581340	SM-2 CKK Double Sliding Door Prismatic Autoclave Sterilizer 1000 L	SM-2 CKK 1000 L	38671 - Steam sterilizer
8698918581357	SM-2 CKK Double Sliding Door Prismatic Autoclave Sterilizer 1200 L	SM-2 CKK 1200 L	38671 - Steam sterilizer
8698918581227	SM-2 KK Single Sliding Door Prismatic Autoclave Sterilizer 125 L	SM-2 KK 125 L	38671 - Steam sterilizer
8698918580152	SM-2 KK Single Sliding Door Prismatic Autoclave Sterilizer 175 L	SM-2 KK 175 L	38671 - Steam sterilizer
8698918580169	SM-2 KK Single Sliding Door Prismatic Autoclave Sterilizer 200 L	SM-2 KK 200 L	38671 - Steam sterilizer
8698918580176	SM-2 KK Single Sliding Door Prismatic Autoclave Sterilizer 225 L	SM-2 KK 225 L	38671 - Steam sterilizer
8698918580183	SM-2 KK Single Sliding Door Prismatic Autoclave Sterilizer 250 L	SM-2 KK 250 L	38671 - Steam sterilizer
8698918580640	SM-2 KK Single Sliding Door Prismatic Autoclave Sterilizer 325 L	SM-2 KK 325 L	38671 - Steam sterilizer
8698918580190	SM-2 KK Single Sliding Door Prismatic Autoclave Sterilizer 425 L	SM-2 KK 425 L	38671 - Steam sterilizer
8698918580206	SM-2 KK Single Sliding Door Prismatic Autoclave Sterilizer 470 L	SM-2 KK 470 L	38671 - Steam sterilizer
8698918580213	SM-2 KK Single Sliding Door Prismatic Autoclave Sterilizer 490 L	SM-2 KK 490 L	38671 - Steam sterilizer
8698918580688	SM-2 KK Single Sliding Door Prismatic Autoclave Sterilizer 538 L	SM-2 KK 538 L	38671 - Steam sterilizer
8698918580695	SM-2 KK Single Sliding Door Prismatic Autoclave Sterilizer 580 L	SM-2 KK 580 L	38671 - Steam sterilizer
8698918580503	SM-2 KK Single Sliding Door Prismatic Autoclave Sterilizer 628 L	SM-2 KK 628 L	38671 - Steam sterilizer
8698918580510	SM-2 KK Single Sliding Door Prismatic Autoclave Sterilizer 670 L	SM-2 KK 670 L	38671 - Steam sterilizer
8698918580527	SM-2 KK Single Sliding Door Prismatic Autoclave Sterilizer 718 L	SM-2 KK 718 L	38671 - Steam sterilizer
8698918580534	SM-2 KK Single Sliding Door Prismatic Autoclave Sterilizer 760 L	SM-2 KK 760 L	38671 - Steam sterilizer
8698918580541	SM-2 KK Single Sliding Door Prismatic Autoclave Sterilizer 800 L	SM-2 KK 800 L	38671 - Steam sterilizer
8698918581210	SM-2 KK Single Sliding Door Prismatic Autoclave Sterilizer 900 L	SM-2 KK 900 L	38671 - Steam sterilizer
8698918581302	SM-2 KK Single Sliding Door Prismatic Autoclave Sterilizer 1000 L	SM-2 KK 1000 L	38671 - Steam sterilizer
8698918581319	SM-2 KK Single Sliding Door Prismatic Autoclave Sterilizer 1200 L	SM-2 KK 1200 L	38671 - Steam sterilizer

SM Series Laboratory Type Autoclave Sterilizer

REFERENCE NUMBER	PRODUCT NAME	MODEL	GMDN CODE
8698918580381	SM-3 D Laboratory Type Vertical Autoclave Sterilizer 75 L	SM-3 D 75 L	38671 - Steam sterilizer
8698918580398	SM-3 D Laboratory Type Vertical Autoclave Sterilizer 90 L	SM-3 D 90 L	38671 - Steam sterilizer
8698918580350	SM-3 Y Laboratory Type Horizontal Autoclave Sterilizer 75 L	SM-3 Y 75 L	38671 - Steam sterilizer
8698918580404	SM-3 Y Laboratory Type Horizontal Autoclave Sterilizer 90 L	SM-3 Y 90 L	38671 - Steam sterilizer

SM Series Washing Function Prismatic Autoclave Sterilizer

REFERENCE NUMBER	PRODUCT NAME	MODEL	GMDN CODE
8698918580008	SM-4 KK Single Sliding Door With Washing Function Prismatic Autoclave Sterilizer 125 L	SM-4 KK 125 L	38671 - Steam sterilizer
8698918580367	SM-4 KK Single Sliding Door With Washing Function Prismatic Autoclave Sterilizer 175 L	SM-4 KK 175 L	38671 - Steam sterilizer
8698918580374	SM-4 KK Single Sliding Door With Washing Function Prismatic Autoclave Sterilizer 250 L	SM-4 KK 250 L	38671 - Steam sterilizer
8698918580312	SM-4 VK Single Door With Washing Function Prismatic Autoclave Sterilizer 125 L	SM-4 VK 125 L	38671 - Steam sterilizer
8698918580329	SM-4 VK Single Door With Washing Function Prismatic Autoclave Sterilizer 175 L	SM-4 VK 175 L	38671 - Steam sterilizer
8698918580336	SM-4 VK Single Door With Washing Function Prismatic Autoclave Sterilizer 250 L	SM-4 VK 250 L	38671 - Steam sterilizer



Certificates and Brand Registry Documents

We believe that the way to the summit passes through high-quality and reliable manufacturing.



**Autoclave
Solution Partners**

SIEMENS

Schneider
Electric

Daifield

Haba Control

EMERSON
ASCA

Silorecan

WURTH

SKF

Amfex



www.sumerinc.com

sumer
INTERNATIONAL INDUSTRY AND TRADE INC.

Address : Başkent OSB Başkent Bulvarı No:81
Malıköy-Sincan/Ankara/Türkiye
Phone : +90 312 394 61 73 +90 312 503 08 21 (pbx)
Fax : +90 312 394 61 95
E-mail : sumer@sumeras.com
Code no : SÜB.01-1
Date : 30.11.2017
Revision : Rev.1

HYGCEN

SZUTEST
NOTIFIED BODY 2192

kiwa
Partner for progress

CE 2195

ISO
13485

ISO
14001

ISO
9001